



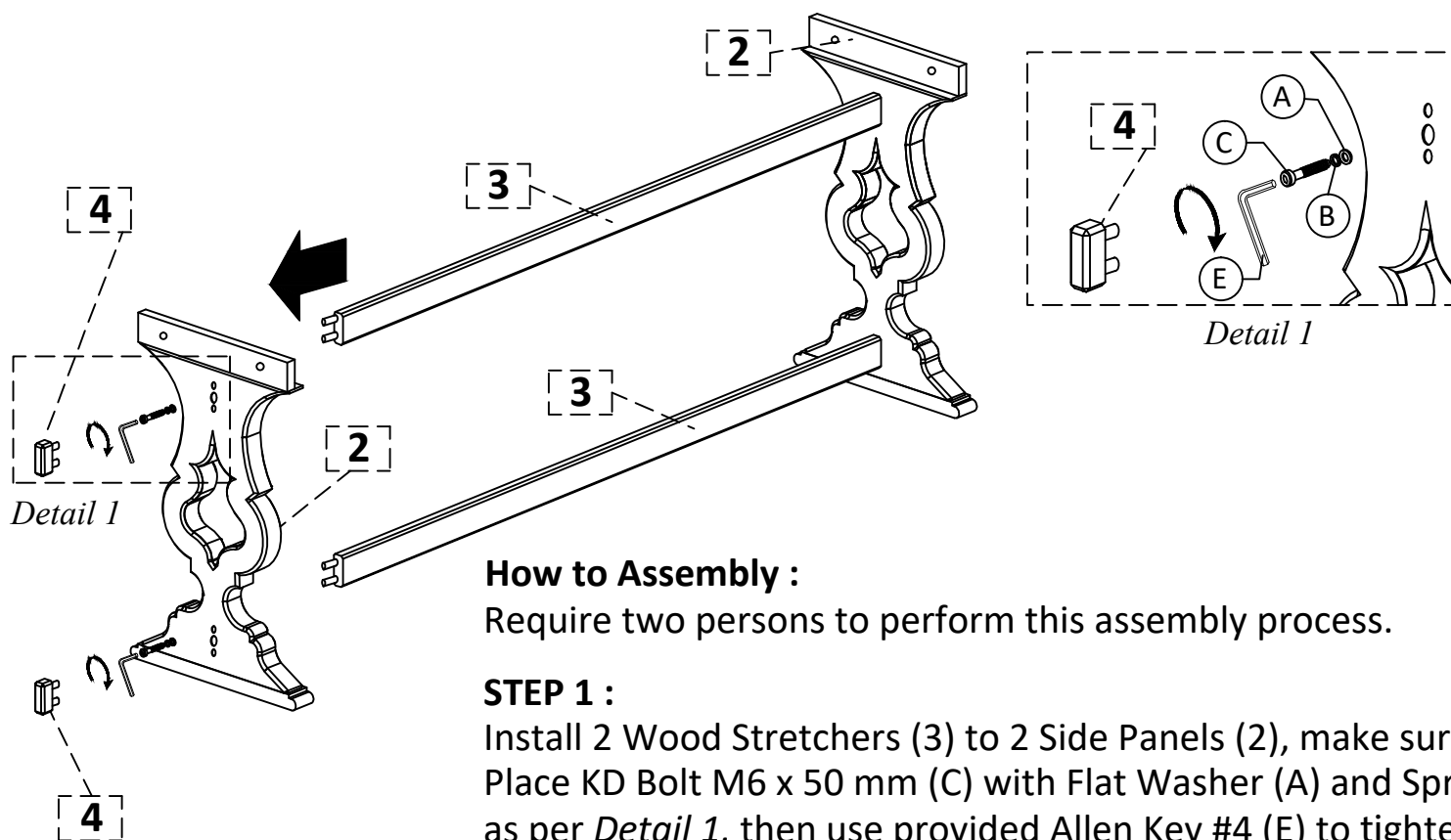
SCH-155290 BURNETTE CONSOLE TABLE ASSEMBLY INSTRUCTION

Hardware Include :

| No | Part | Description | Qty |
|----|------|----------------|-------|
| A | | Flat Washer | 8 pcs |
| B | | Spring Washer | 8 pcs |
| C | | KD Bolts 50 mm | 4 pcs |
| D | | KD Bolts 35 mm | 4 pcs |
| E | | Allen Key #4 | 1 pc |

Parts Include :

| No | Description | Qty |
|----|----------------|-------|
| 1 | Top and Panel | 1 pc |
| 2 | Side Panel | 2 pcs |
| 3 | Wood Stretcher | 2 pcs |
| 4 | False Tennon | 4 pcs |



How to Assembly :

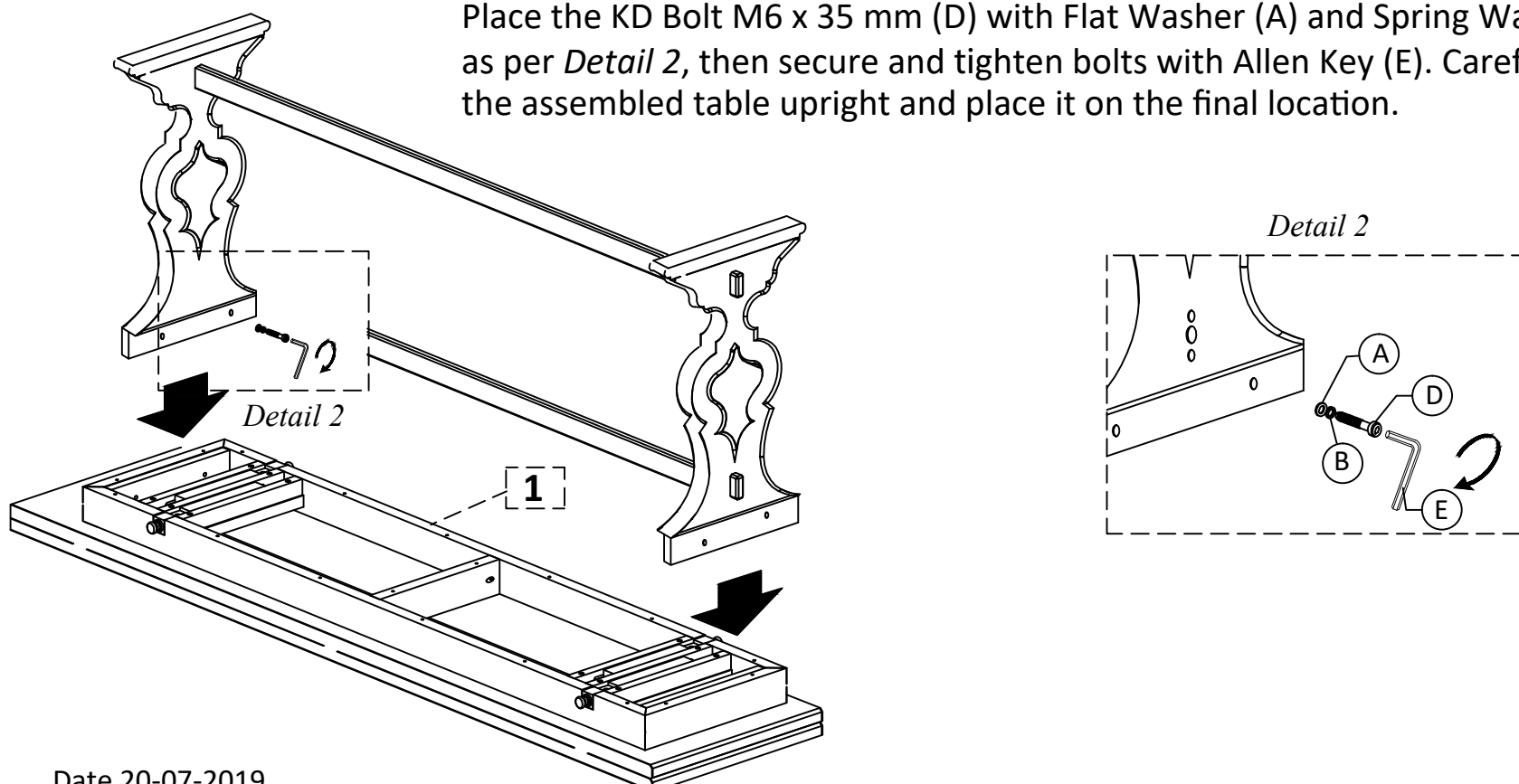
Require two persons to perform this assembly process.

STEP 1 :

Install 2 Wood Stretchers (3) to 2 Side Panels (2), make sure they stand firmly. Place KD Bolt M6 x 50 mm (C) with Flat Washer (A) and Spring Washer (B) as per *Detail 1*, then use provided Allen Key #4 (E) to tighten the bolts at 4 points. After all bolts secured, place the False Tennon (4) as the holes cover.

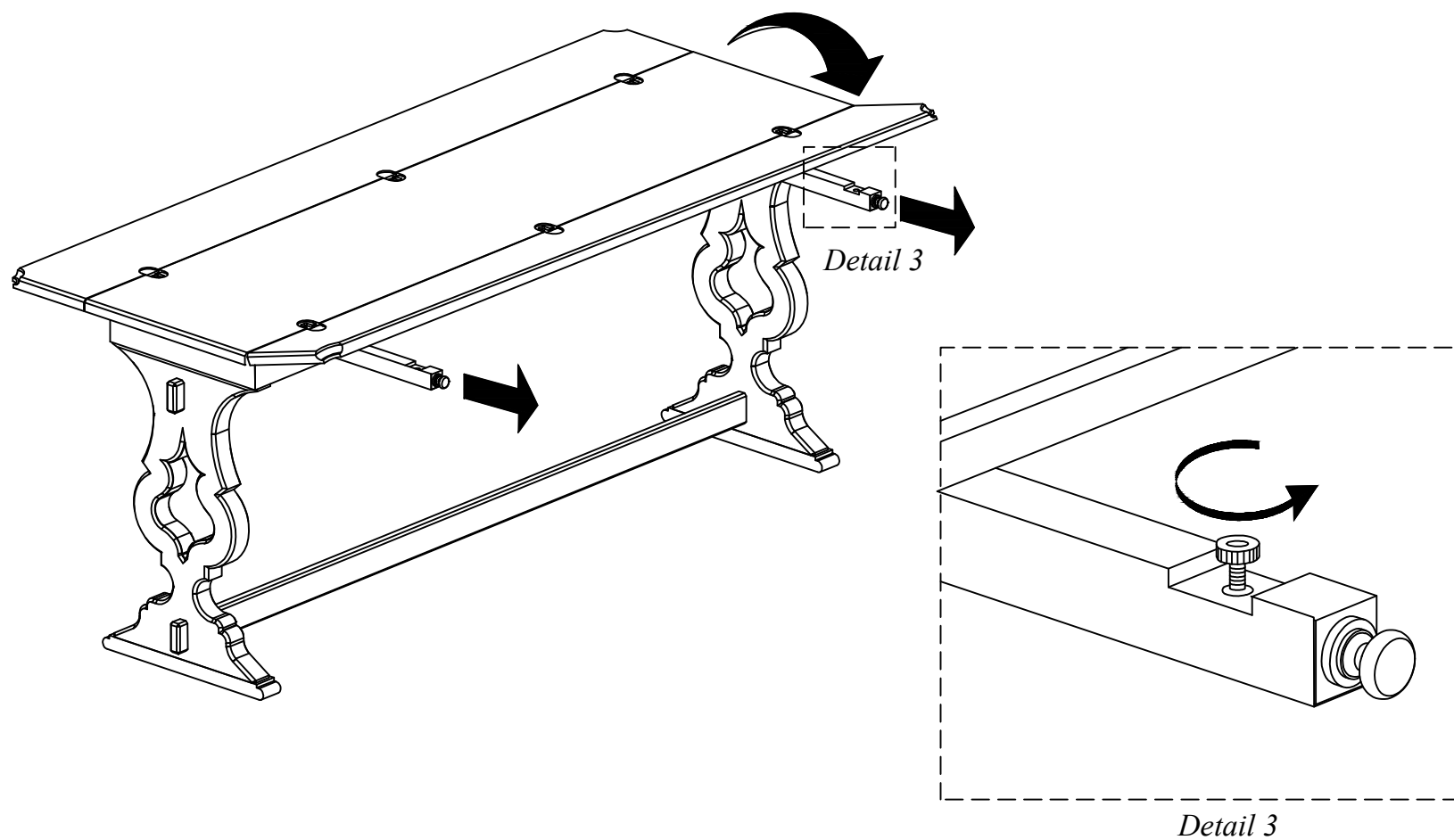
STEP 2 :

Place the Table Top (1) upside down on the floor. It is recommended to lay soft cloth to prevent unnecessary scratches. Carefully place the assembled base to the Table Top. Locate the connection holes at the base to the Table Top Apron. Place the KD Bolt M6 x 35 mm (D) with Flat Washer (A) and Spring Washer (B) as per *Detail 2*, then secure and tighten bolts with Allen Key (E). Carefully turn the assembled table upright and place it on the final location.





SCH-155290 BURNETTE CONSOLE TABLE ASSEMBLY INSTRUCTION



STEP 3 :

To unflip the extension top parts, make sure the the support bar has been pulled to its maximum length. Using the extension table top parts without the support bar may cause breakage on the table hinge. To make sure the extention table part are stable, please adjust the leveller at the end of support bar.

STEP 4 :

If the floor is uneven, please use the levelers located at the underside of the Leg, to do this lift up the table side that needs to be adjusted, turn the leveler until adequate contact with the floor as shown in *Detail 4*.

