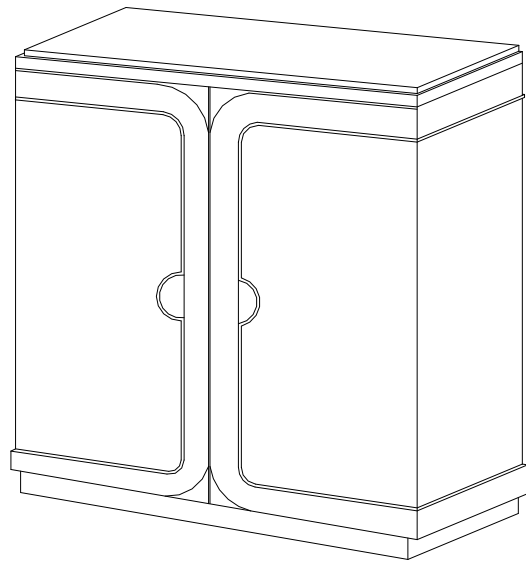




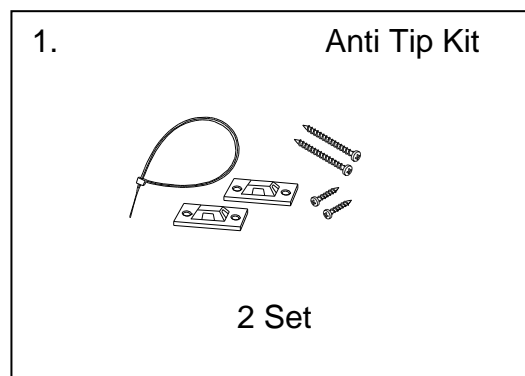
SCH-170235 CHURST CABINET ASSEMBLY INSTRUCTION

HARDWARE INCLUDE :

1. 2- Anti Tip Kit
 - A. 4 -Small Screw
 - B. 4- Large Screw
 - C. 4-Bracket
 - D. 2-Retention Belt



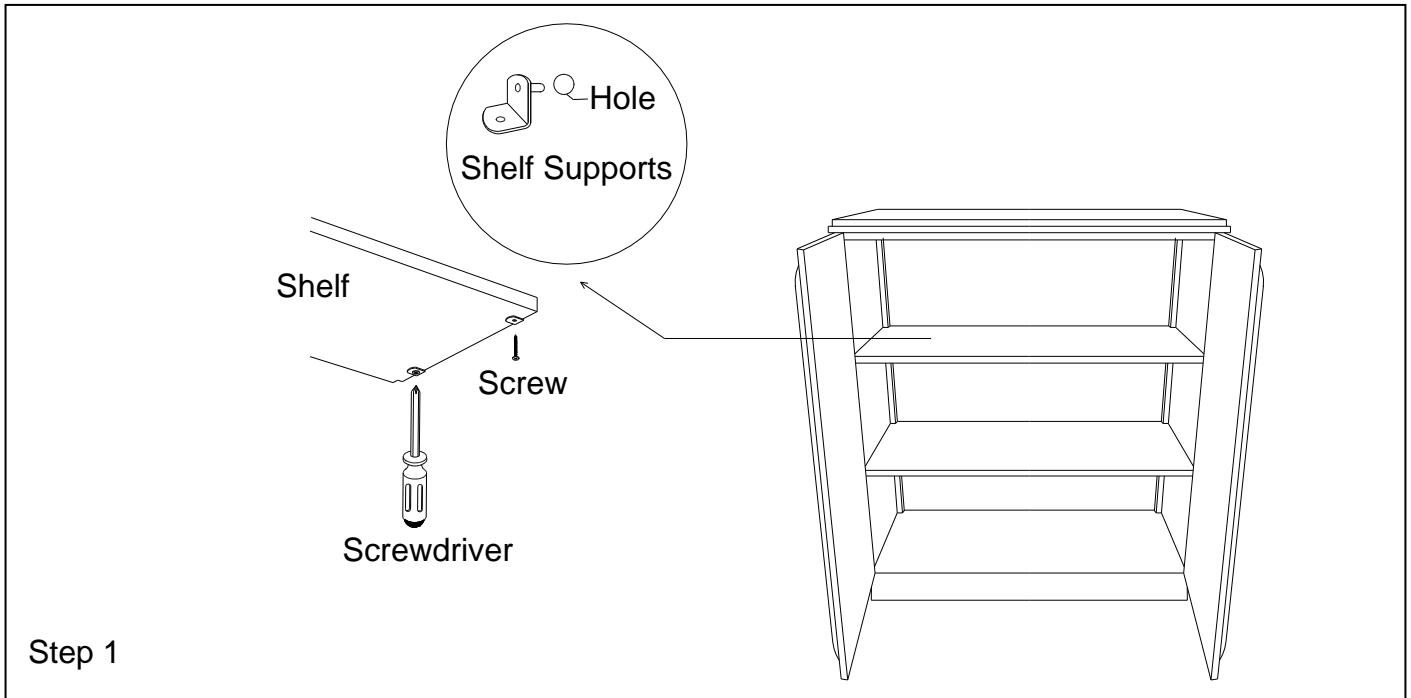
HARDWARE :



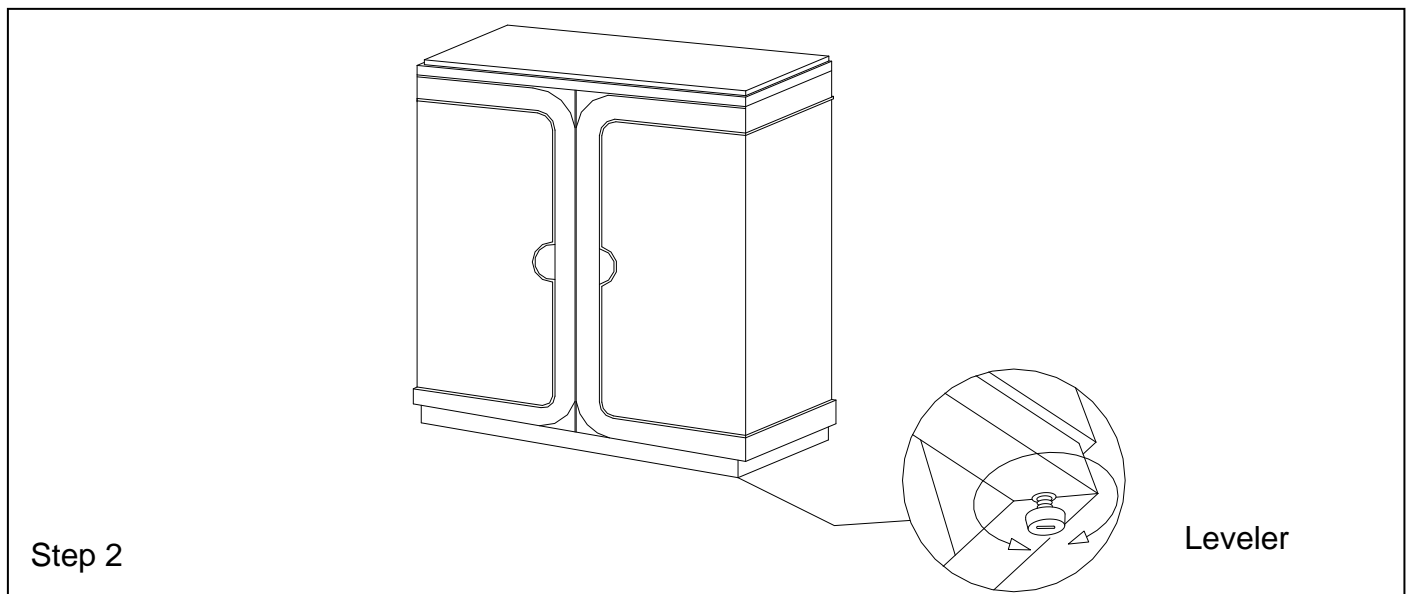


SCH-170235 CHURST CABINET

ASSEMBLY INSTRUCTION



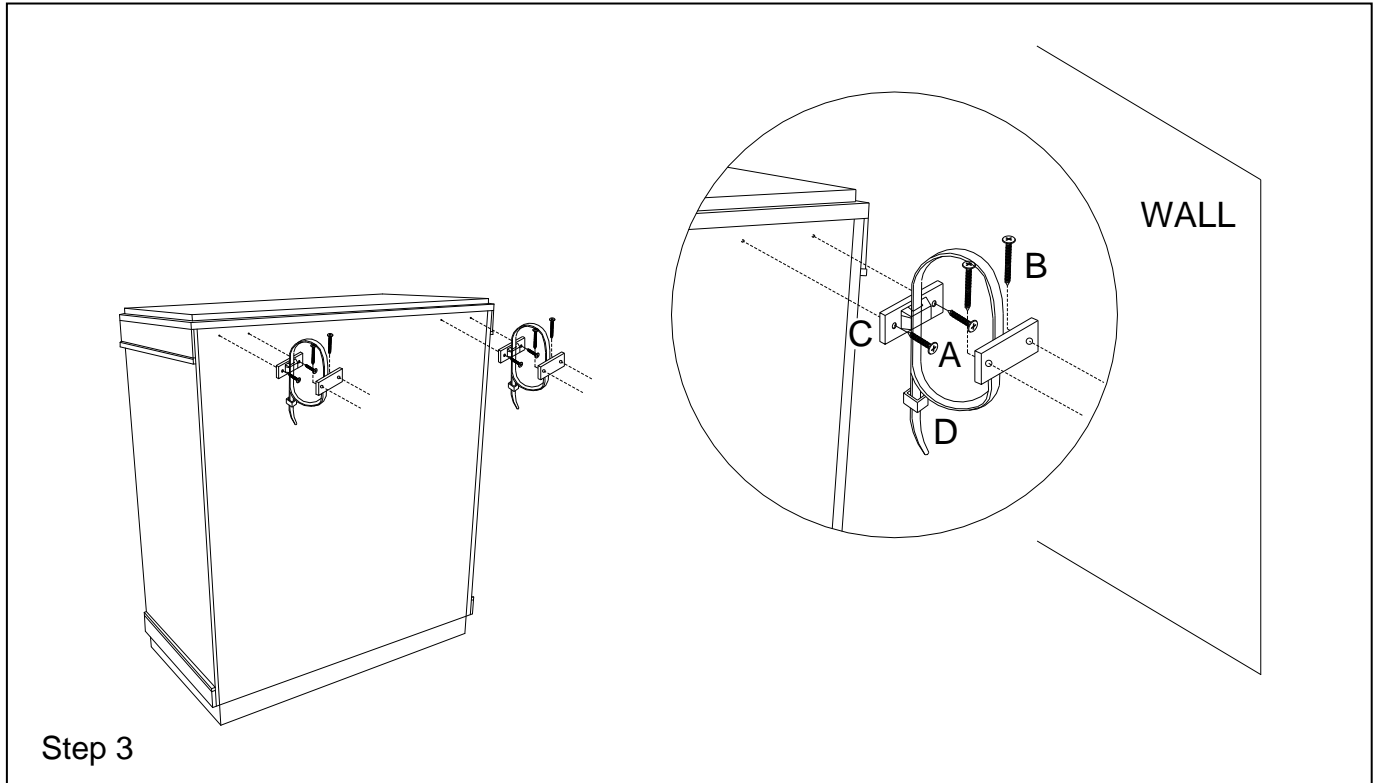
-To remove adjustable shelves, remove screw from shelf support, then carefully lift shelves up and out of the case. To reposition adjustable shelves, insert Stem of shelf supports into Holes in End Panel, as shown. Rest the shelf on the shelf supports, and reinstall screws



- If the floor is uneven adjust the levelers located at the underside of the Base, to do this lift Up the side that need to be elevated to provide access to the levelers, turn the leveler until adequate contact with the floor.



SCH-170235 CHURST CABINET ASSEMBLY INSTRUCTION



Step 3

Attach Brackets (C) horizontally to the top of the back of the Cabinet using the Small Screws (A). Screw the remaining Brackets (C) horizontally 1 inch below the brackets attached to the Cabinet using the large screws (B). The Large Screws (B) should be screwed into a stud in the wall. Align the Brackets and string in Retention Belt (D). Confirm Strap is securely laced and locked.