



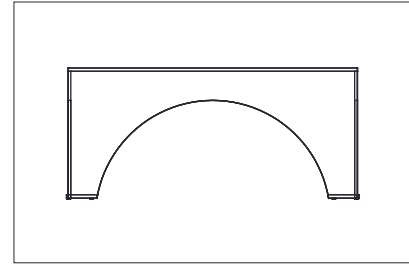
ASSEMBLY INSTRUCTIONS

Cindy coffee table
SCH-170120

TOOLS INCLUDE:

NO.	Hardware List	QTY
A	rubber pad 	12pcs

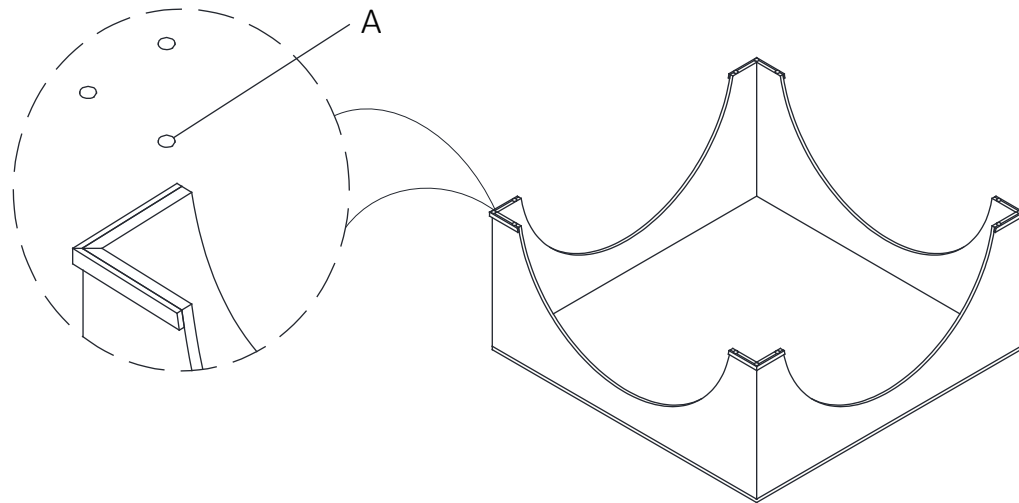
PARTS INCLUDE:



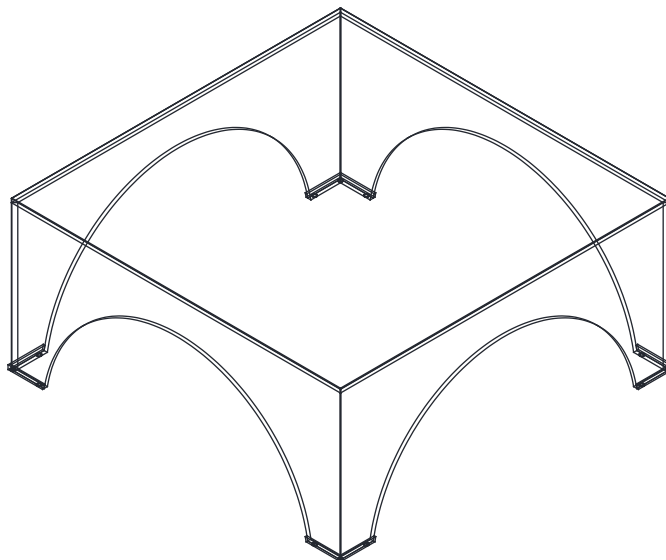
Prior to assembly, unwrap all the parts and components on a carpeted or non-abrasive surface.

Step 1: Unwrap the coffee table from the packaging.

We prepared 12 rubber pad (A) in the hardware package, you can put them at the bottom of acrylic frame accordingly to your needs.



Step 2: Please adjust to proper position for the coffee table during use.



We hope you enjoy this Gabby purchase. Shown: Cindy coffee table by

